

# ISLE OF WIGHT PC USER GROUP

Issue-104



AUGUST 2000



A group of our members on the recent trip to the Houses of Parliament

Inside this issue:

**We** all were anticipating an interesting day out in London to visit the Houses of Parliament and we were not disappointed, particularly as it was a bright sunny day and everything went according to plan.

We made good timing with the ferry and our coach trip on the A3 to London, but met with the usual traffic jams once arriving in London. However, Bob, our driver, knew the quickest route to Westminster enabling us to arrive at the Houses of Parliament with time to spare. Doug Rankine's account of the visit can be found on pages 9, 12 and 13. After the visit to the Houses of Lords and Commons, everyone went their own way to explore the London sights, which took in the London Eye (which was fully booked and tickets were only available for future dates), the Tate Gallery, Buckingham Palace and Trafalgar Square etc. The River Cruises from Westminster Pier were all cancelled due to the bomb scares in Whitehall and Victoria. However, a great day was had by all and we arrived safely back on the Isle of Wight tired but happy with the day out.

Future Meetings	2
Committee Members	3
Editorial	4
Humour	5
E-mail	6-7
Cliff's Report	8-9
Objects of Desire	10-11
London Visit	12-13
Prize Puzzle	14-15
Notice Board	16



**ISLE OF WIGHT PC USER GROUP- COMMITTEE MEMBERS****Honorary President:**

Sir Norman Echlin,

**Chairman:**

Dennis Linzmaier,

**Vice Chairman:**

David Broughton,

**Treasurer:**

Bob Groom,

**Secretary:**

Christine Jenkins

**Membership Secretary/Marketing Manager:**

Douglas Rankin

**Hot Key Distribution & Refreshments:**

Peter &amp; Dorothy Wolletron

**Hot Key Editor:**

Brian Sexton

**New Members Co-ordinator:**

Maggie Butler

**Riverside Centre Liason:**

Ian Capon

**Meetings Reception Assistant:**

John Atkin

**Show Organiser:**

Marilyn Barrett

**Committee Member:**

Cliff Maidment

**Disability Resources Co-ordinator:**

Helen Edom



I have noticed that since installing a network card in my computer in order to connect up my wife's Windows 95 computer my own Windows 98 computer (to enable our computer to share printers) that my startup has slowed down. Apparently one common problem is that a network card has the TCP/IP protocol loaded and is set to obtain an IP address from a DHCP server, but no server is available. My PC will wait up to a minute for an answer from the server before it gives up and continues booting. As I only want to share printing facilities with my wife's computer and not Internet facilities, I have discovered that the binding between the network card and the TCP/IP protocol is not necessary and that I can remove TCP/IP->NE2000 compatible. This has definitely improved my start-up time. I have also removed the "Search for new floppy disk drives each time your computer starts" in the check box. (Right click on My Computer icon on Desktop, select Properties and then click Performance tab, the File System button, then the Floppy Disk tab). In addition I have changed my BIOS settings to boot from the C drive rather than the A drive, which prevents viruses from infecting my system via a boot floppy. My boot-up time has now been speeded up.

#### **Pentium 4 Announcement**

Intel, the chip giant, has issued information regarding the release of their new high-performance Pentium 4 processor. This latest 32-bit chip is expected to launch at the end of the year and is expected to have a clock speed of 1.4GHz, with a 400MHz bus and a large on-chip cache.

#### **Windows ME**

This new version should be called Windows 98 Third Edition but we are now into the new millennium, thus the new name. Windows ME offers Internet Explorer 5.5 with Print Preview, Media Player 7 and Movie Maker, together with a Home Networking wizard. Also the Control Panel and Start Menu have been redesigned and the desktop colour schemes have been improved. The retail price of this upgrade is yet to be determined and will affect the success of this product. Apparently the release date is set for September 14th.

#### **Computer Health - Getting greater stability in Windows 95/98**

[http://members.xoom.com/\\_XMCM/Khephra/a/health.htm](http://members.xoom.com/_XMCM/Khephra/a/health.htm)

#### **Windows Shutdown Troubleshooting: 15 Steps**

[Http://members.xoom.com/\\_XMCM/Khephra/a/shutdown.htm](Http://members.xoom.com/_XMCM/Khephra/a/shutdown.htm)

### **The Isle of Wight PC User Group**

welcomes all owners and users of IBM Compatible Personal Computers.

It is a group which seeks to exchange ideas and seek new information.

Our meetings are informal on the **first and third Wednesdays of each month at The Riverside Centre, Newport, 7.30- 9.30 pm.**

The first Wednesday has usually a formal talk whilst the third Wednesday is more informal, geared to the new user and aims to help out members with specific problems.

#### **Membership is £12 per year.**

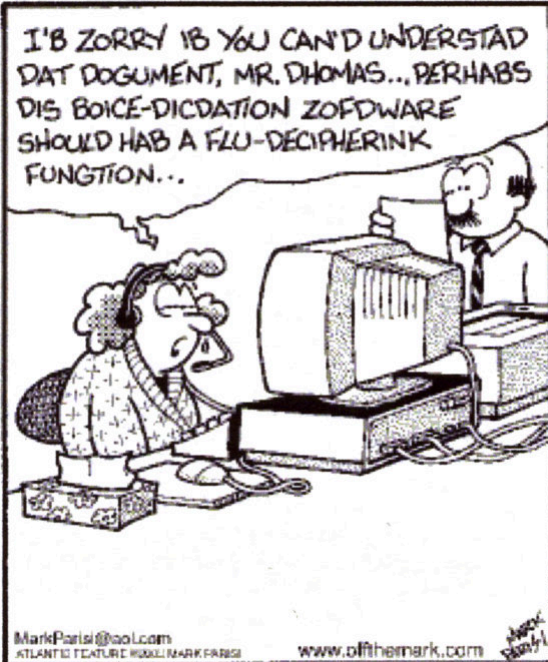
This journal, "HOTKEY", is produced every month.

#### **Visitors are welcome.**

If you would like to know more about us, either come along to one of our meetings or contact one of our Committee Members on one of the numbers on page 3.



H  
U  
M  
O  
U  
R



# Presentation on Emails & Onelist



The club meeting of Sth July had David Broughton and Douglas Rankine talking about e-mails. David started with an outline of good practice, particularly when editing e-mails as replies to those received. In Newsgroups in particular it is often the case that several points need to be answered from the original posting and this is best done by quoting snippets from the original. The convention is to place a '>' symbol at the start of each quoted line but only sufficient text from the original should be quoted to make the context clear. For postings containing several points, these quoted sections should be interspersed with the corresponding replies. Most e-mail software will add the '>' symbols automatically when you hit the 'Reply' button. (There are variations which are just as good, but some symbol should be used to make it plain which is the original and which is the reply).

David went on to ask members replying to eGroup postings to cut out all the repetitions. Unfortunately, Outlook Express places the reply cursor at the top of the original text, which tends to hide all the repetitions that have accumulated as

postings are replied to several times over. The adverts in particular should be removed as they contribute nothing to the discussion. Careful editing of e-mail replies, with suitable contextual quotes, will enhance considerably the quality of our eGroups mailing list.

Douglas Rankine had a different approach and wanted to emphasize the value that the mailing list is to the club, and he was less concerned with the niceties of editing than with the need to communicate. He also added that the eGroups web site contains a wealth of information and useful facilities that all members could make use of. For a start there are the archives which contain copies of all postings made by club members, arranged in threads (unlike the lists of e-mails shown with a typical e-mail program which will be ordered by date, usually). He explained that a thread was the text placed in the subject line which is automatically copied to the next posting (with 'Re: ' added) and that reading threads is much better than trying to follow several different subjects down a list of e-mails. At the web site also there is a file storage system where files can be downloaded (the new Club Constitution, for example), and members may also upload files that they think may be useful to other members.

Douglas explained that there are two stages to the eGroups mail list system: first you must subscribe (no fee payable!). This is done by either asking to join, or by being sent an invitation by the email list manager. When this is received, you hit the reply button and send it back without doing anything else. Your subscription is then confirmed by the email list manager and another email is sent to you confirming your membership and giving you an authorisation code. You then have two choices you can send the email back to:-

[iwpcug@egroups.com](mailto:iwpcug@egroups.com)

and you will be subscribed and able to receive and make postings, or you can go directly to [www.egroups.com](http://www.egroups.com) home page



where you will find a box where you can put in your email address and the authorisation code. This will give you access to the [iwpcug@egroups.com](mailto:iwpcug@egroups.com) site and you can then select profile and change your authorisation code for a password of your choice, and one which, preferably you will find easy to remember. Keep a copy of this password in a folder on your email software, in case you forget it. You can also fill out your profile so that other members will be able to see your details. Once you are registered you will be able to use the other facilities on the site, such as the shared files area, the database, the polling service and so on.

You can unsubscribe at any time, by clicking and selecting the address at the

bottom of any email from:-

[iwpcug@egroups.com](mailto:iwpcug@egroups.com)

and sending it off to egroups. It is as easy that. No one is forced to register of course, but we would encourage you to do so, as part of learning how to use the Internet and to gain access to the other facilities available at egroups.

If anyone has difficulty in subscribing or registering then please contact myself and I will be pleased to take you through the process.

*Compiled by:*

*David Broughton & Douglas Rankine.*

N.B. Please note that since our presentation, Egroups has been taken over by Yahoo, so there will be a number of changes coming along in the next few months. This shouldn't affect us too much but there will be lots of new and better facilities coming on line when the takeover is accomplished.

Why not visit the Isle of Wight Personal Computer Users Group website at <http://www.ddina.demon.co.uk/iwpcug/> ?

*Doug Rankine*

## WatchDog Puts Bite On 'LifeStages' Worm

*Exclusive Winmag utility traps .VBS files before they wreak havoc on your PC.*



After the outbreak of "ILOVEYOU" virus, it became apparent that Microsoft's Windows Scripting Host (WSH) has a problem. On one hand, it's an invaluable tool for developers. It can be used to create login scripts quickly and easily, install programs, I and many other programs that need registry and file copy privileges. On the other hand, a malicious programmer can use it to create malicious and destructive viruses. It'd be a shame to abandon WSH simply because of the actions of a few miscreants. So we bring you WatchDog, our new Hot Fix that scans your programs.

<http://www.winmag.com/fixes/watchdog/default.htm>

*--Jason Levine*

## VISIT TO THE HOUSE OF COMMONS

by Cliff Maidment



Having just won a 16-1 chance of getting into the Strangers Gallery to listen to the "Prime Minister's Question Time", I was immediately jumped on by Brian to write a few words on my impressions of the visit.

First of all I would like to thank Dougie for an extremely well organised outing. It was not his fault that there were only 2 tickets available for question time.

We set off on the coach in fine style on a beautiful sunny and warm day. On our arrival at the Houses of Parliament we were split into 3 groups of 10 or 11. Our guide was the man who controlled the division bells and whose

boss was the sergeant at arms. He was very knowledgeable and entertaining. I learnt a lot

of the history of the Houses of Parliament, for example I did not know that the chamber of the house of Commons was destroyed during the second world war and the Commons moved into the house of Lords who were shunted into another area. We finished our tour in the 900 year old Westminster Hall, at which point, after the group photo, Dougie decided to have a draw for the 2 tickets for Prime Minister's question time. Yours truly was lucky enough to get one. We then split up to go for lunch and do our own thing.

Before climbing up to the Strangers Gallery we gathered together in the central lobby to see the arrival of the Speaker of the House. This took the form of a procession led by the Sergeant At Arms carrying the mace, followed by Betty Boothroyd in her regalia, accompanied by her three clerks. As they entered the lobby a voice boomed out " Strangers remove your hats", so I dutifully complied.

The first item on the agenda was questions to the Secretary of State for Northern Ireland.

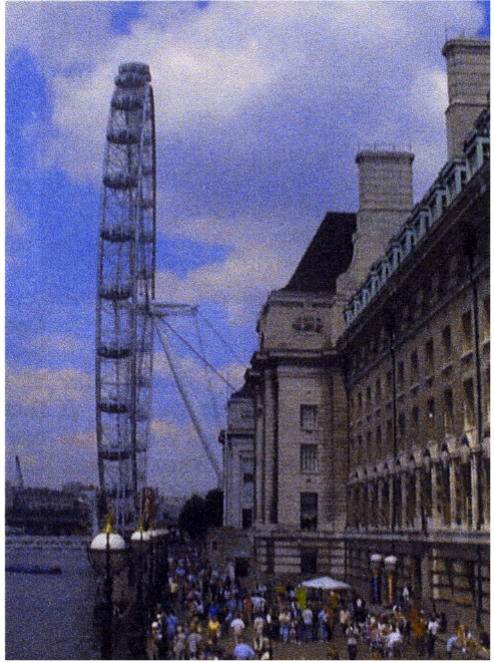
This was highlighted by the fact that there had been two bomb scares that morning. A large number of questions (29) were tabled on the

order papers but only a few were given an airing due to the half-hour time limit. The questions were mainly on the progress of the peace talks and the decommissioning of illegal arms and explosives.

Next on the list was P.M.'s question time and suddenly the house was full (standing room only). The atmosphere was like a cross between a bear garden in which the P.M. and the leader of the opposition were trying to score points by baiting each other and an American football match in which both contenders have their own cheer leaders. The half-hour session as usual was not very constructive as they argued about the financial policies of both sides.

Never the less it was quite stimulating, I take my hat off again to Betty Boothroyd for managing to keep some kind of control over the rabble.

It was a very enjoyable day out.



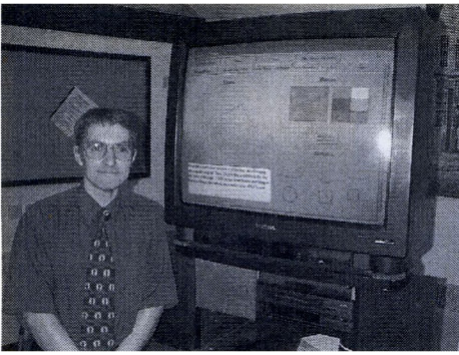
## IWPCUG TRIP TO THE HOUSES OF PARLIAMENT - JULY 19th 2000 by Doug Rankine

We arrive safely by some excellent coach driving by Bob, our driver for the day, and are deposited next to the park where TV presenters conduct their interviews with the recalcitrant M.P.s of the day. Here, the Sovereigns Entrance, at the western end of Parliament is used as a backdrop to give authenticity to the currency and place of the events. Unfortunately, though the gates are open today they aren't for the likes of us. We have to walk to the entrance for the plebs and be imprisoned in a cage whilst our credentials are checked, by police and security men before we are allowed entry. After a delay, we are ushered in; lucky I had that itinerary I typed with me, as there was no one there from Dr. Brand's staff. Up the stairs and through some more security screens, checking us out for guns and bombs, we slowly made our way to the hall, which once was parliament and where Spencer Perceval, the prime minister, was assassinated in the 19th.

Century. This fact is not well known amongst the Queen's subjects.

Eventually, our researcher hostess turns up, late, and we meet up with our guides. They are dressed casually in light blue shirts and grey trousers, as they shepherd us on through the various halls to the members lobby and thence to that "other place" the House of Lords, describing the various pictures, the architecture, the history and the ancient traditions that are etched on the very masonry of the palace walls. How strange it is to see the place full of ordinary mortals, mixing with the occasional M.P. taking a party around the edifice, or palace officials, such as the serjeant-at-arms, with their peculiar uniforms, guys in tails and top hats rushing about with bits of paper, on a mission of some kind or other.

*(Continued on page 12)*



# "OBJECTS OF DESIRE"

Part 4

by Tim Bateman

(Continuing his article on Visual basic)

## CHECK BOX

A Check Box is used to get an answer of either Yes or No, True or False from the user. It works like a light switch. Either it is on or it is off - there is no in-between. When a Check Box is on, a tick mark is displayed in the box. This indicates that the answer to the Check Box's corresponding question is Yes. When the Check Box is off, or unchecked, the box is empty, indicating an answer of No. Although a check box naturally lends itself to Yes/No type questions, it does actually have three settings. As well as being set to either on or off it can also be dimmed so that it cannot be selected at all. Check Boxes can also be used to specify which program options are to be enabled and to allow the user to specify what options they wish to install. A dimmed Check Box indicates that a program option is unavailable to be selected. There is a further setting that is not part of the official values but has been developed by programmers. This setting involves colouring the Check Box grey to indicate that only some of the available options have been selected. Look carefully at the Check Boxes within Add/Remove Programs/Windows Setup and you will see how it works.

The Check Box is similar to the Option Button in that each is used to indicate a selection that is made by the user. They differ in that only one Option Button in a group can be selected at a time. With the Check Box, however, any number of Check Boxes may be selected.

**Example:** My Computer/Control Panel/Display/Effects.

## OPTION BUTTON

Option Buttons let the user select a single item out of a group of items. This is the equivalent of a multiple-choice test. You can only "choose one Option Button from a group. Option Buttons work like the speed selection buttons on a fan. If you press down one button, all the other buttons come up. The Option Buttons work in the same way: when you select one button, whichever other buttons are currently selected becomes deselected. Option Buttons have the same capabilities for controlling the appearance of an individual button as a Check Box.

**Example:** Start Menu/Shutdown.

Although Check Boxes and Option Buttons may appear to be very similar, the fact that only one Option Button (within a Group Box) may be selected makes them quite different functionally. For example, if you offer the user a group of Check Boxes, you can obtain multiple on/off responses at the same time, which you cannot get with Option. Buttons. This is handy when a question you ask the user might have more than one valid response (that is the responses are not mutually exclusive). Also, if you have a group of Option Buttons, the user cannot deselect all options if one option has been selected. The user can select and deselect Check Boxes at will. This is an important consideration if a programmer wants the user to be able to select no choices.

## GROUP FRAMES

Although only one Option Button placed directly on a form can be selected at a time, there is a way to give your users choices from several groups of buttons at the same time. Grouping buttons allows users to select items Acafé style - one starter, one main course and one dessert. When the buttons are grouped properly, you can select one button from each

group of buttons. When groups of buttons are placed within a Group Frame they are treated as part of the box. This means that when a box is moved, all the objects within it move too.

The purpose of using a Group Frame with Option buttons is to segregate the buttons within one Group Frame from buttons that are on the form or in another Group Frame.

**Example:** My Computer/Control Panel Internet Options



## SCROLL BARS

Scroll Bars that appear in Combo Boxes and List Boxes are part of these objects and are not objects in their own right. However, you can have Scroll Bar objects. The Scroll Bar objects come in two types; horizontal and vertical, but their only difference is the orientation of the bar on the form. All of the Scroll Bar's properties and events are the same no matter which way they are orientated.

The Scroll Bar is controlled with whole numbers in the range of -32,768 and 32,767. One typical range would be between 0 and 100 with the Min property of the Scroll Bar set to 0 and the Max property set to 100. If you click the Up or Down arrows in a Scroll Bar you move a small distance and if you click between the arrows and the position button you move a large distance. This can be set using the SmallChange and LargeChange properties. Both properties have a default value of 1 but a good number for the LargeChange property would be 1/10th of the Max number.

**Example:** My Computer/Control Panel/Fonts

## IMAGES

The Image object provides a frame for a bitmap or other picture on a form. The object can be placed anywhere on the form and drawn to any desired size. The picture is assigned to the object using the Picture property either at Design Time or Run Time. It is also possible to stretch the image so that the whole picture fits into the object. This setting causes the overall size of the picture to change and can change the aspect ratio of the

picture. Another advantage of using the Image object is that more than one can be placed on a form and their visibility can be controlled using the Visible property.

**Example:** My Computer/Control Panel/Display/Picture in Monitor.

It is also possible to have a picture display in the background of a Form by setting the Picture Property of the Form.

## LINES AND SHAPES

The Line and Shape objects provide the easiest way to add graphic elements to a form. They are drawn on the form at Design Time and placed where you need them. During Run Time their properties can be changed so they can be hidden, moved and even have their colour changed.

The Line object can have its width changed as well as the style of the line and its length. Usually the Line object is used to separate areas of the form from each other. A good example of this is the Add/Remove Programs Dialog Box. It has a line that separates the Install and the Uninstall sections.

The Shape object allows you to create 6 different shapes that are set using the Shape property. It is also possible to fill the shape with a colour with the FillColor property. As with the Line object, a Shape's properties can be altered during design and run time.

**Example:** My Computer/Control Panel/Add/Remove Programs

*To be continued*



All too soon, we arrive in the House of Lords, with its woolsack for government civil servants and officials and its closed off seating for the Lords of Appeal, whilst the Lords Spiritual and the Lords Temporal sit in the ordinary. This is the fount of all wisdom in the country, the High Court of Parliament, the final appeal court, the legal arbiter of all that is moral, ethical and just in our society, with a special place for the sovereign, its walls encrusted in gold leaf, surrounding the throne, just as one sees it on T.V., but for real! A long hall, with rows of maroon leather seats, loudspeakers for the deaf discretely at head height on which the peers of the realm can deliberate with eyes closed on the laws of the land. A magnificently ornate squared ceiling again covered in gold leaf, reflects the light from the beautifully coloured stain glass windows. Microphones hang down by their cables, like spiders jealously clutching their web and television cameras with telescopic lenses and electric motors look down from the

balconies, to focus on the lords as they have their say.

Content yes, Not-Content no. Their numbers are sadly depleted these days as the government puts through its reforms. There is now plenty of space for their lordships to languish on the benches. No undignified fighting goes on here for a seat at the front as it does in the Commons. At the end of the hall, the doors face the House of Commons which stands a long way down at the end of the corridor. This is where that ancient ceremony takes place, where every year, the sovereign and the commoners exert their rights and beat the bounds of parliamentary property and open a new parliamentary session. One can hear the ghost of the black rod as he walks with his mace and hammers on the door of the Commons.

We walk down some more corridors to the lobbies and take a seat while Hansard is

## E-Mail Acronyms

A few of the more common electronic communications acronyms are included in the following website:-

<http://www.cknow.com/ckinfo/acronyms/enmailpbbsaaronyms.htm>

explained to us. The record of every word stated in Parliament by M.P.s. is put down verbatim in a printed book. How I remember learning the rules of this book whilst reading law. Our guide explains to a mystified audience how the order papers and parliamentary questions are framed for the Prime Minister to answer. The art of asking non-questions to catch him out and the art of giving non-replies in return, the ultimate political game is played out here. We pass through the lobbies, where the bodies of the M.P.s are still counted physically by the whips when a division takes place on a piece of legislation. No excuses for non-attendance or making a mistake by entering the wrong lobby can be excused here. No computer or electronic counting either. The ancient regime is still all powerful.



And then, the finale, what it is really about. We enter the seat of our sovereign and liberal parliamentary democracy, the House of Commons, where every day decisions which affect our daily lives are taken by the elected government. We went on past the benches where the solicitor clerks to parliament sit, ready to advise and correct on parliamentary procedure and legislation and then, the ultimate, to stand on the very spot where prime ministers have stood for centuries, accounting to the people for their actions at the despatch box. To stand there and to be allowed to feel it, the wood and brass ornamentation, worn by the hands of the country's greatest and worst leaders, was a nice touch I thought.

Our journey came to an end, all too soon, and we assembled in Westminster Hall, where the King of England Charles I, of late abode in Carisbrooke Castle on the Isle of Wight, who thought he had the divine right to govern over the commoners of England suffered a great shock when he lost the right to keep his head. Today it has a more gentle function, it educates

the visitors in the ways of Parliament.

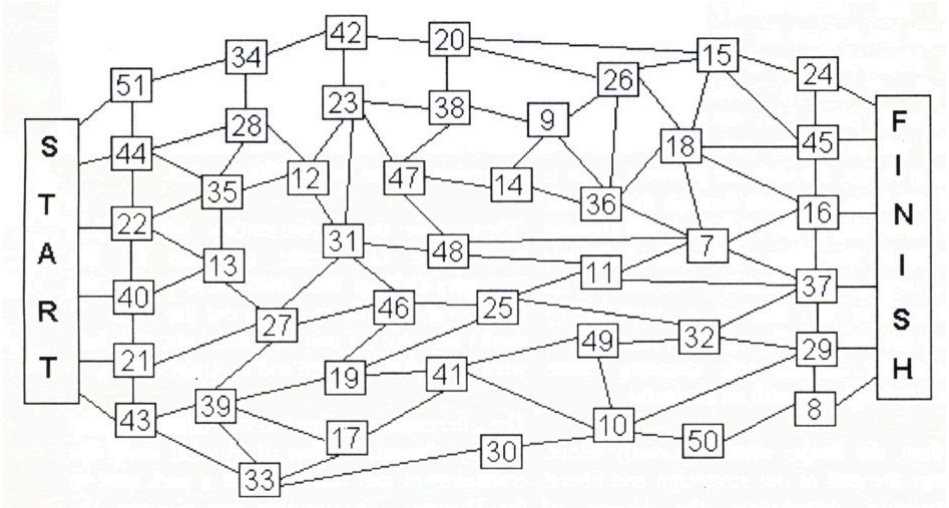
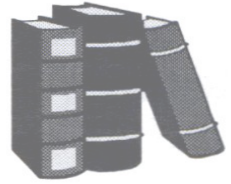
Then came the Parliamentary lottery, first there were nine seats available for the Strangers Gallery, then there were two, so we had to run a raffle to ration out the seats. X marks the spot on two of the tickets, and they went to Cliff Maidment and to Andrew King.

The afternoon was free, so our colleagues did as they pleased. A few of us went along the embankment and had lunch in a park next to the Thames. The weather was glorious, the streets and parks full of people, the Queen Mother's birthday celebrations were due to take place later on that day, so there were plenty of soldiers in their bright red uniforms, shining black leather boots and helmets all glinting in the sun. Policemen mingled with the tourists keeping a watchful eye out for bags left on their own and then it was 4.30 and time to go home. A bomb scare held up the traffic and the coach was late arriving at our pick-up point. Everybody had done their own thing and seemed to have had a pleasant afternoon. We boarded the coach and once we were outside London, made good time back to the Ferry. How nice it was to disembark on the other side after "Crossing the Bar" and get back to that peace and quiet of our island and return home to that other "News From Nowhere" in Lake.

*Doug*



**PRIZE PUZZLE CORNER**  
**AUGUST 2000**  
 by David Broughton



**C**hoose ten squares from the above diagram that form a path from the start to the finish along the tracks shown. The winner is the one with the highest total when the numbers in all ten squares are added.

Your answer must show the sequence of squares chosen plus the total. Please send your answers to me, David Broughton (for addresses see page 3) to arrive by Wednesday, 7th September, 2000.

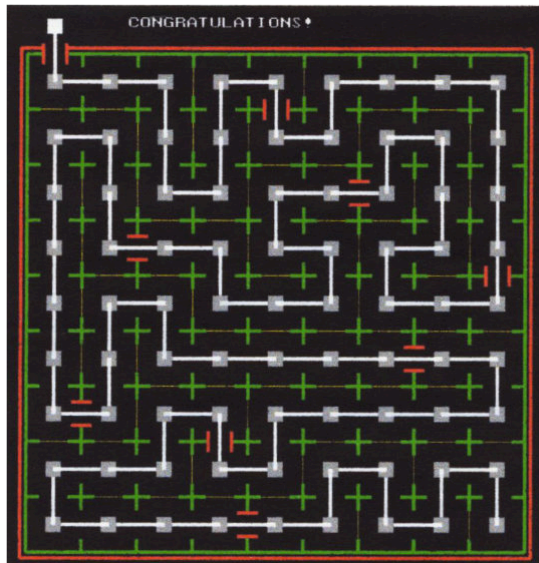
### ANSWER TO THE JUNE PUZZLE

This puzzle, called ESCAPE, was on the Hot Key cover disk as a computer program. There were two parts: competitors who did both parts had two chances in the draw for the winner. I received six answers to part 1 and four to part 2. They were Dennis Linzmaier (2), Molly Mills (2), Colin Boon (2), Clem Robertson (2), Barry Cant (1) and Ken Cameron (1).

Molly Mills won the draw and the £5 book token.

Congratulations to Molly as this was her first entry into the world of Hot Key puzzles.

There was more than one solution to both parts. The diagram below shows one possible solution to part two.



Disembarking from the coach opposite the Westminster Houses of Parliament

# MEMBERS NOTICE BOARD

**This Board is FREE to members  
Please use it!**



## FOR SALE

### GAMES

Diablo - £4.99

Silver - £9.99

Settlers 2 - £4.99

Contact Andy

Tel. #####

## FOR SALE

### Printer

**Brand New LEXMARK Z31 Colour Jet Printer**

£55 (incl. Vat)

**EPSON Compatible 740 Black Cartridges**

£6.50 (incl. Vat)

Contact David Baldwin

Tel. ##### (h)

Mobile: #####

## *Special Notice*

**Complaints have been received about people talking at club meetings during the main presentation. Would all members be reminded that talking at meetings should be reserved for the coffee break or after the meeting has been concluded.**

## FOR SALE

### Computer

**Pentium 200 with 64Mb RAM-2Gb Harddrive**

£190 (incl. Vat)

### Sound Card

£12.50 (incl. Vat)

Contact Dennis Parkes

Tel. #####



Hot Key is published on the first Wednesday of every month. This edition was compiled using Microsoft Publisher 2000 and reproduced on an Epson Stylus 880 Colour ink jet printer and a Brother HL-1250 laser printer.

The views and opinions expressed here are those of the contributors alone. No responsibility can be accepted with respect to advice or suggestions made in this journal.