



Nurses Daisy, Carole and Stephanie, with Denny, in St. Mary's Hospital

Inside this issue:

## MICROSOFT OUTLOOK 2000 TALK

Douglas Rankine gave an interesting presentation on Microsoft Outlook at the Riverside Centre recently, for which we offer our grateful thanks. Doug must have spent many hours reading the book on Outlook and experimenting with the software. It is not the easiest of programs to learn and use, so it was educational, to say the least, when Doug clearly illustrated on the big monitor how the software can be so useful in organising one's daily schedule. He also demonstrated how the calendar works and showed how you can set a reminder for a tea-break, say in 15mins. time, when up pops a musical note to let you know it is time for a break. Doug also explained how tasks and the journal works and used various personnel in the club membership to illustrate how he is reminded of the member's birthdays. Outlook 2000 (a sophisticated version of Outlook Express) helps you to organize all your messages, schedules and tasks and in addition will enable you to send faxes through the built in Symantec Winfax. A very useful piece of software.

Future Meetings	2
Committee Members	3
Editorial	4
Humour	5
Crash Protection	6-7
Backup Tips	8-9
AMD Challenge	10-11
Word Web	12
Prize Puzzle	14-15
Notice Board	16

# FUTURE MEETINGS

<b>4th October</b>	Sound Bytes	Tim Bateman (with others)
<b>18th October</b>	Software Aids for the Blind	Nigel Clatworthy
<b>1st November</b>	Corel Draw Tutorial	Ian Capon
<b>15th November</b>	Microsoft Word Tutorial	Dennis Linzmaier
<b>19th November</b>	This event is now cancelled - see below	
<b>6th December</b>	Hot Key Productions/Ms Publisher 2000	The Editor
<b>20th December</b>	Christmas Party	Riverside Centre
<b>3rd January</b>	Windows Millennium Operating System	Denny Linzmaier
<b>17th January</b>	Backup Systems	David Broughton and Douglas Rankine
<b>7th February</b>	A.G.M. followed by Questions and Answers on hardware and software	Denny Linzmaier
<b>21st February</b>	Introduction to Internet Usage	To be advised

## CANCELLATION OF ANNUAL SHOW

The Committee have regretfully decided that the Annual Show this year will not take place. The Annual Show has been a regular feature of the club's activities from the first full year of the club's formation in 1990. Although the first year was mainly to show the hobby activities of club members, subsequent Shows have been mainly for commercial Island firms to exhibit and sell their computer-related products.

But organising the show each year requires some dedicated effort from members and this year we have been unable to find that level of response, though illnesses of two key persons, Cliff Maidment and Dennis Linzmaier, were contributory factors.

The Committee are determined that next year the organisation of the show will start earlier with the appointment of a Show Sub-committee who will Report regularly to the main Committee on progress. Volunteers are needed for this. You don't have to be

on the main Committee to be on the Show Sub-committee, although the main Show Organiser should be on both. We hope to appoint that Sub-Committee shortly after the next AGM in February. The sort of help required will be announced later but it is important that members consider what help they can offer. As was intended for this year, the Show next year will include a section for members' own hobbies, computers and web sites to be on show to the public.

The usual concessionary annual subscription of £10 that was granted to persons joining or rejoining at the Show will this year apply throughout the whole month of November.

The Committee regrets any inconvenience that may have been caused due to the cancellation of the Show this year.

## ISLE OF WIGHT PC USER GROUP- COMMITTEE MEMBERS

3

**Honorary President:**

Sir Norman Echlin,

**Chairman:**

Dennis Linzmaier,

**Vice Chairman:**

David Broughton,

**Treasurer:**

Bob Groom,

**Secretary:**

Christine Jenkins

**Membership Secretary/Marketing Manager:**

Douglas Rankin

**Hot Key Distribution & Refreshments:**

Peter &amp; Dorothy Wolletron

**Hot Key Editor:**

Brian Sexton

**New Members Co-ordinator:**

Maggie Butler

**Riverside Centre Liason:**

Ian Capon

**Meetings Reception Assistant:**

John Atkin

**Committee Member:**

Marilyn Barrett

**Committee Member:**

Cliff Maidment

**Disability Resources Co-ordinator:**

Helen Edom

# EDITORIAL

In view of contributions drying up from our club members, I took the initiative to procure articles from other PC User Groups further afield and after trawling the Internet, I came across "Bay Bytes", the newsletter of Greater Tampa Bay Personal Computer User Group in the U.S.A.



<http://gtbpcug.org>

In their newsletters I discovered contributions from Ken Fermoye, which I believed would be of interest to our members. With this in mind I sent an email to Ken asking for his permission to include his writings in our own Hot Key, to which he sent the following reply:-

"I'm more than happy to grant permission for you to use excerpts from the "Changes" article and to add you to the mailing list. I visited your "WPCUG website briefly but want to go back and investigate some of the links to information about the Isle of Wight. I'm very interested in learning more about it. I have attached several other more recent columns that might interest you and yes, the articles are provided free to user groups and other non-profit organisations. It's my way of giving something back to User Groups for nearly 20 years of learning, support and fun that I have enjoyed as a member of several groups.

I make only 2 requests:

1. that a short copyright/id paragraph be included at the end of each article and
2. that the group send me a copy of any newsletter in which one of my articles appears. I do read the newsletters, to keep in touch with what's happening in the User Group community, to get ideas for future articles and to learn from the many excellent articles they contain.

Other groups from abroad often send me a packet of 2 or 3 issues every quarter to save on postage, which is fine with me. Or, when you get your Hot Key newsletter online, an e-mail notice when an issue is posted will suffice.

The column has become truly international since I started it with 11 editors (all from California, Nevada and Arizona) in August, 1997. It goes to 4 or 5 groups in Australia, several in New Zealand, many in Canada, 2 in England and 1 each in Panama, Costa Rica, Greece and Japan. The total mailing list has grown to about 350-360 at this point.

Please visit my website at:- <http://www.zyworld.com/wordsmithken> Best Regards - Ken"

## **The Isle of Wight PC User Group**

welcomes all owners and users of  
IBM Compatible Personal Computers.

It is a group which seeks to exchange ideas  
and seek new information.

Our meetings are informal on the **first and  
third Wednesdays of each month at The  
Riverside Centre, Newport, 7.30- 9.30 pm.**

The first Wednesday has usually a formal talk  
whilst the third Wednesday is more informal,  
geared to the new user and aims to help out  
members with specific problems.

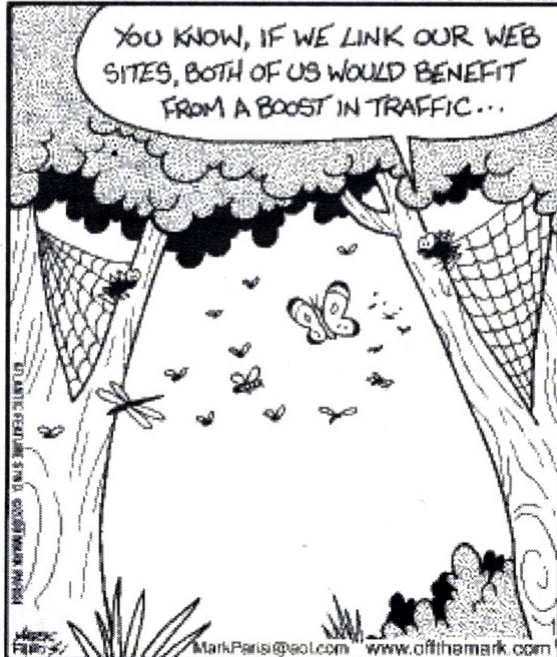
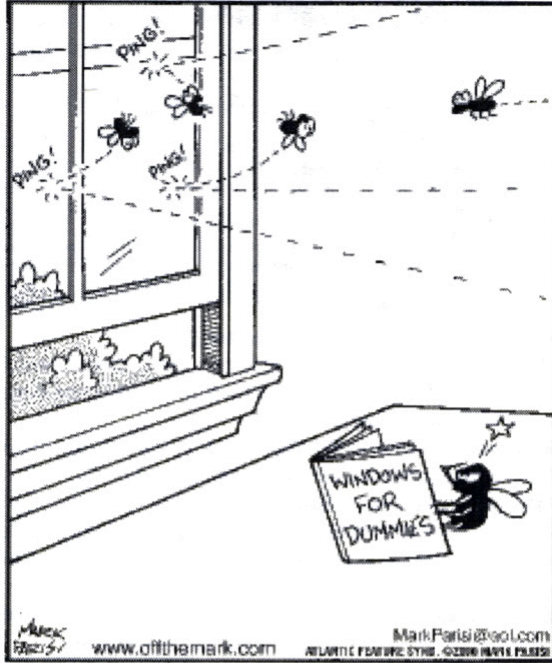
**Membership is £12 per year.**

This journal, "**HOTKEY**", is produced  
every month.

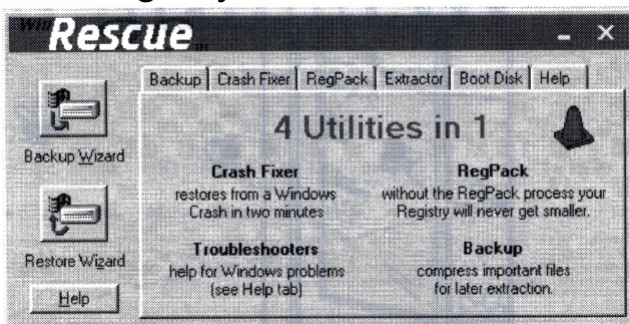
**Visitors are welcome.**

If you would like to know more about us, either  
come along to one of our meetings or  
contact one of our Committee Members on one  
of the numbers on page 3.

# H U M O U R



# Registry Crash Protection



## Recover from a Crash in Two Minutes!!!

WinRescue 98 backs up the Registry and important configuration files, cleans up the Registry, and provides fivefold protection from system crashes.

## Windows 98 Won't Start?

Run WinRescue in Safe Mode or use the WinRescue bootup diskette to restore the Registry from outside of Windows98.

## Did a Program Mess up Windows?

WinRescue makes snapshots of Windows. If you install a program that messes up Windows, just use the Crash Fixer to restore Windows to the way it was before.

To download this useful utility for Win95/98 or Windows Me, go to:-

<http://www.superwin.com>

## BUY or LEASE?

Microsoft are planning a dramatic change in the way software is distributed. It seems that the trend will be to the system increasingly used by automobile companies: leasing of products rather than selling them outright. This has obvious benefits for the vendors. Microsoft and others could reduce packaging and distribution costs and perhaps reduce the piracy potential

ASP's (Application Service Providers) will provide the programs. An ASP is defined as "a third-party service firm, which deploys, manages and remotely hosts a pre-packaged software application through centrally located servers in a "rental" or lease arrangement. In exchange for accessing the application, the client renders rental-like payments".

IBM CEO Lou Gerstner believes that "new personal computing devices, such as PDA's (Personal Digital Assistants), Web-enhanced TV's, screen phones, smart cards and a host of products we have yet to imagine" will gradually replace the personal computer. However, the consensus of opinion amongst the PC enthusiasts is that computers will still be desired by the general public and regular users of the PC will still be upgrading with new, faster and more capable machines well into the future.



Extracts from an article written by Ken Fermoye -  
 kfermoye(@earthlink.net)

## Access your e-mail account from anywhere

Hotmail is the world's first web-based e-mail provider, which means you can send and receive messages from any computer connected to the Internet. You can use Hotmail from home, work, school, an Internet café, a friend's house or any other computer in the world with an Internet connection. Your messages are stored in a central location, so your Inbox will always be up to date. This is great for people who use more than one computer, travel frequently, or don't even own a computer.

## Get a permanent e-mail address

When you create a Hotmail account, you choose a permanent e-mail address that will never change as long as you continue to use Hotmail. This is great for people who:

*Want to switch Internet Service Providers.* Your Hotmail address will be the same no matter how you access the Internet, so you don't have to worry about retrieving messages from your old address or notifying friends, family and associates of a new e-mail address. You are free to select any Internet Service Provider that suits your needs.

## Your e-mail is private and secure

When you sign up for Hotmail, you choose your personal ID and password. The only way you can access your account is by using the password you select. This means that only you will have access to your Hotmail account, even if you use a computer at a public terminal or a friend's house. Because the messages in your Hotmail account are stored securely at a central location, you don't have to worry about losing important information if something happens to your computer.

<http://www.hotmail.com>

### PROVERBS

- The e-mail of the species is more deadly than the mail.
- A journey of a thousand sites begins with a single click.
- You can teach an old mouse new clicks.
- C:\ is the root of all directories.
- Too many clicks spoil the browse.
- There's no place like <http://www.home.com>
- Don't byte off more than you can view.
- Fax is stranger than fiction.
- Modulation in all things.

*Our thanks Greater Tampa Bay PC User Group*

### Family History Meeting

A report on the Family History Meeting can be found on our website at:-

<http://www.ddina.demon.co.uk/iwpcug/>

- (click on Latest News for the full report )

## BACKUP TIPS

Because disaster happen in the computer world, it is essential to backup your important data and updates to anti-virus software. In view of this there are several ways to avoid the loss of your files by means of backup procedures. To name a few, these are:-



### Using Microsoft Backup

This has been improved significantly since the Window 95 version.

First, it is a Seagate Software product; second, it has a wizard to walk you through and third, it supports SCSI tape drives. Suppose you want to back up your data files (which, of course, are all neatly filed in a main Data Files folder, divided into subfolders). Select Start, Programs, Accessories, System Tools, Backup. Choose Create A New Backup Job and click OK. Select Backup Selected Files..., then click Next. In the left pane, click to place check marks in the boxes next to the folder(s) and/or drive(s) you want to backup — in this case, the C:\Data Files folder — then click Next. Leave All Selected Files selected, then click Next and set a destination for the backup (such as your Zip drive or another drive on your hard disk). Click Next two more times, name the backup job and click Start.

When Microsoft Backup finishes doing its thing, you'll see a message telling you the operation is complete. Click OK twice. If you have followed these steps, you now have a backup job in the form of a .qic — file we'll call it MyBackup.qic. As your data files change, or as you create new files, you will want to update this backup to reflect these changes. Select Start, Programs, Accessories, System Tools, Backup: select Open An Existing Backup Job and click OK. Choose the backup you want to update and click Open. Next to What to Backup, select New

and Changed Files, then click Start. Microsoft Backup will now do exactly what you've asked — backup only new or changed information.

Now that you have this backup file, how can it help you? Let's suppose your system just crashed and you have lost all your data files. Once — or should we say, if — you get your system up and running again, select Start, Programs, Accessories, System Tools, Backup. Select Restore Backed Up Files, click OK, then select the location of the .qic file you want to restore (for example from your Zip drive or from your hard drive). Click ext and the wizard will walk you through the rest of the restoration process.

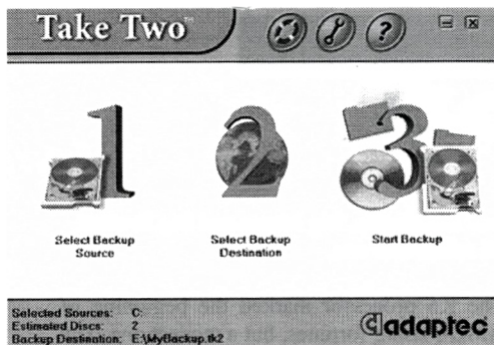
\*\*\*\*\*

*Symantec Ghost™*

### Using Norton Ghost

<http://www.ghostsoft.com/>

Another backup system is Norton Ghost. To start Ghost, boot your computer into DOS and then from the floppy disk with the Ghost software on it type ghost.exe at the A: prompt. The Symantec screen appears and using the arrow keys on your keyboard, (or if your mouse is supported in DOS, use the mouse) click on the Local tab and then Partition>To Partition and then select the source drive. Select the source partition and Ghost will then display the details of all partitions it can find on the selected source drive and allows you to select the partition you wish to copy from. Select the destination drive and Ghost will display the details of every disk it can find on the destination PC and allows you to select the disk you wish to copy the partition to. Select the destination partition and Ghost will then display details of all the partitions it can find on the selected destination drive and allows you to select the partition you wish to copy to. Before starting to write to the destination partition, Ghost displays the source and destination details and gives you a chance to back out. Select Yes to proceed with the partition copy and when the operation is complete, reboot your computer.



## Using Adaptec's Take Two

Select Backup Source allows you to select the physical disks or logical drives on your computer that you want to backup. By default, the screen displays all of the physical drives attached to your computer, and selects them for backup. Each physical drive is identified by its size. Double-click a drive's description to see the logical drives (also called "partitions"), that are identified by their name (volume label), drive letter, total size, and type. "My Computer", the physical drives, and logical drives all have check boxes preceding them. A check mark in the box indicates that a physical disk or logical drive will be included in the backup. Click the boxes to toggle them on and off to control the drives you want to backup.

**NOTE:** For a full recovery of your system using an emergency boot floppy disk, you must select all drives and partitions for backup. As you select or remove physical disks and partitions for backup, Take Two estimates the total number of CD-R/RW discs required to complete the backup and displays this number in the status area at the bottom of the screen.

Select Backup Destination allows you to select the CD-R/RW device where your Take Two backup set will be written. The screen defaults to listing all the DirectCD compatible devices on your computer. Each device is identified by a drive letter, the manufacturer name and model number. The devices have a check-box preceding them.

and only one device can be checked. To change the backup destination click on the check box. The path name and file name for the new destination will appear in the status area of the Take Two screen.

Start Backup begins your backup procedure. Take Two checks the source and destination choices that you have made, and looks for open files.

Take two can only restore your system if the final backup set contains the data for all the logical drives on all of your physical disks. If you intend to use your backups to restore your entire computer in the case of a catastrophe, cancel the backup at this point and return to step 1, Select Backup Source, to select all the drives on your computer for backup.

If you do not select all of your computer drives, a message appears warning you that not all of your computer's drives are selected and your backup will not be usable for a complete system recovery.

If Take Two detects one or more files open for editing in other applications it displays another message warning you that there are open files on your system. The program attempts to take a "picture" of all the files on a logical drive at the moment your backup starts. If a file is still open, the result may not be accurate. You can fix this by closing the programs containing the open files and trying again.

After the backup procedure begins, Take Two displays information about the current backup process in the status area. To see more detailed status about the backup procedure, select "More Status".

The wizard will backup the C drive or the drive designated and eject the CD-R/RW disc when the operation is complete.

**NB: Don't miss the forthcoming event "Backup Systems" on Wednesday 17th January at the Riverside Centre.**



## Intel Faces Strong Challenge From AMD

by Ken Fermoyle

Is the WinTel dominance over the PC universe crumbling at the edges? The synergistic combination of software and central processing chips forged so successfully by Microsoft and Intel is far from losing its place as king of the computer hill, but it is facing new challenges.

For Microsoft, of course, the main problem it faces is the legal one, the threat of being broken up into two separate companies. A lesser thorn in Bill Gates' side is the growth of Linux and other open source code, including Apache, which rivals NT in the Internet server arena.

In the case of Intel, the clear and present danger comes from AMD and its expanding impact on the central processing unit (CPU) market. AMD's current Athlon chips already have leapfrogged Intel offerings in some respects and a recently-announced cross-licensing deal with Motorola promises to result in high-performance copper-based chips running at more than twice the speed of today's fastest mainstream CPUs.

This could make AMD an even more formidable competitor for Intel, which has not yet announced plans for a similar copper interconnect technology.

Only a few years ago, AMD was strictly a minor league player. Its products were the poor relations of the CPU family, while Intel

was Big Daddy, Big Mama and Big Brother, all rolled into one.

The K6 processor marked the beginning of AMD's rising fortunes, but a modest one. The chip) was used only in lower-priced computers, and vague rumours surfaced that it might not be fully compatible with all Windows features and some applications. That was fully laid to rest with the advent of K6-2 chips, but the gurus advanced new doubts. Would AMD be able to produce the chips in adequate quantities to win respectable market share?

Then came the K7 chip. It attacked Intel right in the heart of its most lucrative product area: high-end, premium-priced, cutting-edge processors for power or work station users and other early adopters willing to pay top dollar for the latest and greatest in computerdom.

Better known as the Athlon, the K7 processor is totally different from that of the earlier K6 series. The processor has an internal architecture, which uses Digital Equipment Corporation's Alpha EV6 system interface technology. This gives it a system bus interface of 200 MHz, capable of delivering data transfer rates of up to 1.6 GB/sec. The EV6 can scale up to 400MHz in future, as faster processors arrive. The Athlon has a 128 KB L1 cache broken into two 64 KB instruction and data caches each. It is a .25 micron chip with 22 million transistors

By contrast, the latest Pentium HI (PII) processors run have a 100 MHz system bus. The PHI has a 32 KB L1 cache. Both processors have a 512 KB L2 cache. It is also a .25 micron but with 9.5 million transistors.

The Athlon employs enhanced 3DNow! technology. Instead of the original 21 instructions meant to improve the floating-point capabilities of the processor, the K7 has 45, or 24 new instructions. They are designed to improve the processor's performance in speech-recognition and video processing, and to provide enhanced functionality for Internet browser plug-ins. They also add new digital signal processor (DSP) instructions, to enable better communication with soft modems, ADSL, and sound.

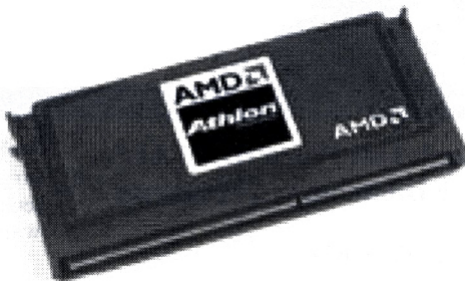
The PHI fits into a Slot 1 motherboard based on the Intel SE440BX-2 chipset. The Athlon fits into a Slot A motherboard based on the AMD-750 chipset. This chipset consists of two chips, namely the AMD-751 and AMD-756. The first controls the 200 MHz front-side bus, system memory, AGP, and the PCI bus. The second one controls the PCI-to-ISA bridge, USB interface, and EIDE interface for both UltraDMA/33 and UltraDMA/66.

What does all this mean in practical terms? Essentially there seems to be little difference between the K7, or Athlon, and equivalent PIII chips when it comes to running typical productivity programs: word processing, spreadsheets, presentation apps and the like.

Where the Athlon outpaces the PIII in most cases is in high-end tasks, such as CAD and other graphics-intensive processing where good floating point capability is important. This is a major improvement in an area where previous AMD processors were notably weak

Despite AMD's improvements, Intel PIII chips still seem to have an edge in 3D performance and remains the best choice if you do such 3D tasks as animation and rendering.

As for the AMD-Motorola alliance to produce copper-based processor chips, it's far too early to tell how successful the effort will be - though the combination is intriguing.



Announcements so far report that Motorola's Semiconductor Products Sector, Austin, Texas, will contribute its manufacturing expertise to the effort, moving both parties to a 0.18-micron, and then to a 0.15-micron design rule with its HiPerMOS copper interconnect process technology.

In return, Motorola will receive the rights to AMD's flash-memory patents, allowing it to begin offering high-density, low-power embedded flash micro controllers sometime next year. The two companies will conduct jointly staffed programs in Austin and at AMD's headquarters in Sunnyvale, Calif., and will share development expenses.



**Copyright 1999 by Ken Fermoye, Fermoye Publications. Ken Fermoye has written some 2,500 articles' for publications ranging from Popular Science to MacWeek, Microtimes and PC Laptop. Ken's Korner, a syndicate monthly column, is available free to User Groups. For information or permission to reprint this article, contact:**

**Kfermoye@\*\*\*\*\*.net**



## Check Out WordWeb 1.61, Free Dictionary, Thesaurus

by Ken Fermoye

Do you ever get stuck for the meaning of a word, or grope for a synonym that eludes you completely? The handiest tool I've found for such occasions is a software program called WordWeb for Windows.

In fact, I count it as one of the most valuable utilities currently installed on my computer. And the basic program, Version 1.61, is free for the downloading! There is one version for Windows 95/98/NT and another for Windows 3.1. Sorry, DOS diehards, there's no version for you.

As a writer, avid reader and major crossword fan, I've depended on dictionaries since childhood. I taught my kids to use them from the time they were very young, often much to their chagrin. ("Dad, how do you spell \_\_\_?" "Look it up; you know where the dictionary is." "Aw, Da-a-d, do I hafta?") But they've taanked me since for that training.

In the five months since I discovered WordWeb, I find myself making fewer trips to the bookshelf for my hardbound Webster's University dictionary or to the big Webster's unabridged version on its own stand in the living room. Instead, I click on the WordWeb icon on my desktop or, if I'm using Word, I simply open the Tools menu and select WordWeb from it.

Version 1.61 contains definitions and synonyms for 120,000 root words, 100,000 synonym sets, many antonyms, a host of proper nouns and more. It also has an installation feature that allows you to tie it to

Word, as mentioned above. The Set-up program asks if you want to include a template to make WordWeb available from within MS Word.

(I only wish a similar option was available for WordPad, which I use for a lot of my writing, but I guess that might be difficult.)

I've tried WordWeb on several of my computers and it runs fast on all of them, even the oldest model with a 225MHz cpu. It not only comes up fast when using it on a stand-alone basis, but pops up definitions and synonyms in its own window from within MS Word in a hurry, too

All you have to do to get a definition or synonym while in Word is highlight or just click your cursor on the word you want to check. Then open the Tools menu and click on the WordWeb icon. (See sample screen shot on page 13)

At the top of the WordWeb dialog box is the Lookup line, which contains the word you want defined. (If you use WordWeb outside of MS Word, you must type in the word at this point.)

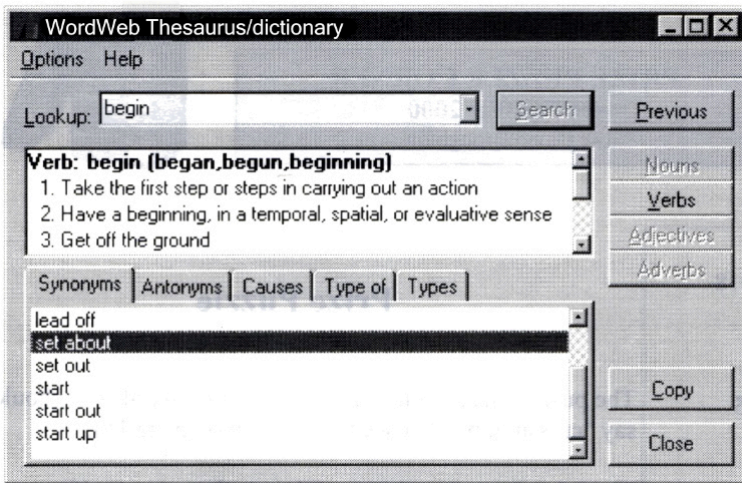
Below that line is the definition window, then comes a series of tabs: synonyms, antonyms, types, etc. You click on whatever tab you want to get additional information about your Lookup word.

It's even simpler than it sounds, actually.

You can download the program at:

**[www.netword.demon.co.uk/wweb/](http://www.netword.demon.co.uk/wweb/)**

Developer Antony Lewis also offers two other programs, including WordWeb Pro,



which adds several features to the basic utility:

1. Wildcard word searches. For example? 2d??ek would find the word midweek.
2. Find straight and multi-word anagrams. For example WordWeb Pro finds powder brow + many others.
3. You can edit and add to the dictionary/thesaurus as well!

The first two items are especially important to crossword fans (like me!) and the latter is a big benefit for anyone.

Cost of the Pro version is just \$18.

The third program Lewis has written is Crossword Compiler, which turns you into an instant crossword puzzle constructor. This one costs \$45 for the full version but a demo version, restricted to 10x10 squares, can be downloaded for free.

Lewis also offers various word and language lists to add to the programs, as well as assorted bundles.

I started with the free WordWeb utility, then upgraded to the Pro version. I like the "add & edit" feature, and the wild card and anagram

features are helpful when you're trying to solve a really tough crossword puzzle. WordWeb Pro takes up 7.74MB of hard drive space. The base version is about 1MB smaller.

Frankly, I think the free version of WordWeb is one of the best deals you will find on the Internet but check it out for yourself at the URL given on page 12.



**Copyright 2000 by Ken Fermoye, Fermoye Publications. Ken Fermoye has written some 2,500 articles for publications ranging from Playboy and Popular Science to MacWeek, Microtimes & PC Laptop. Ken's Korner, a syndicated monthly column, is available free to User Groups. For information or permission to reprint this article, contact kfermoye@\*\*\*\*\*.net.**



**PRIZE PUZZLE CORNER**  
**OCTOBER 2000**  
 by David Broughton



**CLUES**

- $A1 = A12 + D18$   
 $A3 = D17 / 7$   
 $A6 = AT * 75$   
 $A7 = A11 / 45$   
 $AS = A21 + 45$   
 $A10 = A18 + 6$   
 $A11 = A7 * 45$   
 $A12 = D3 / 7$   
 $A14 = A21$   
 $A16 = A1 + 8$   
 $A18 = A7 + 42$   
 $A19 = D1 / 12$   
 $A20 = D17 / 119$   
 $A21 = A14$   
 $A22 = A23 + 4704$   
 $A23 = A22 / 9$   
 $D1 = A19 + 7667$   
 $D2 = A1 * 23$   
 $D3 = A12 + 1356$   
 $D4 = A1 * 1129$   
 $D5 = A16 - 400$   
 $D9 = A14 * D15$   
 $D13 = A10 * 485$   
 $D15 = A14 + A21$   
 $D17 = A3 + D1$   
 $D18 = A23 - 3$

**Prize Puzzle**

The puzzle this month is a numerical crossword -- or should I say "crossnumber"? (See the diagram on page 15).

The "clues" are equations and the numbers are  $A_n$  (for across) and  $D_n$  (for down), where  $n$  identifies the number in the top left corner of the starting square. Starting a number with zero is not allowed. All numbers are base ten (\* means multiplication, / is division; all divisions are exact; i.e. no remainder).

Send your completed puzzle to me:-  
 David Broughton (see address page 3), to arrive by  
 Wednesday, 1st November.

If you have no idea at all how to get started, you may visit my  
 web page at:-

<http://www.ddina.demon.co.uk/>

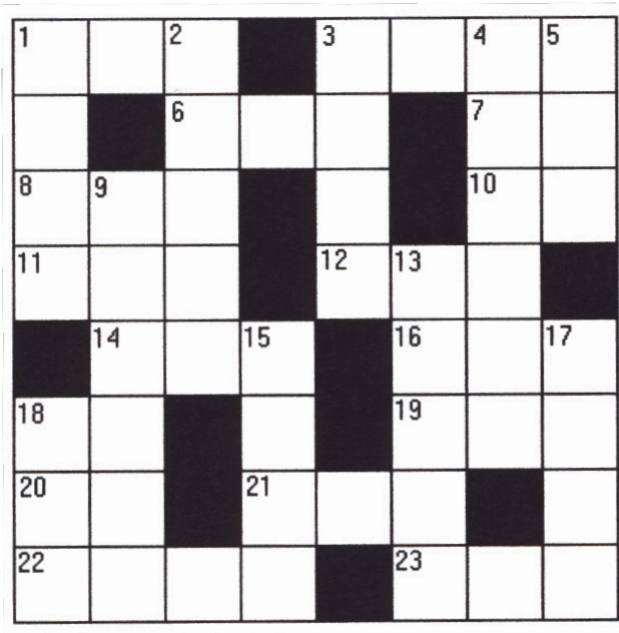
and click on "HK Puzzle Hints". But you shouldn't do this until  
 you have made a good effort and have failed to make any  
 progress.

\*\*\*\*\*

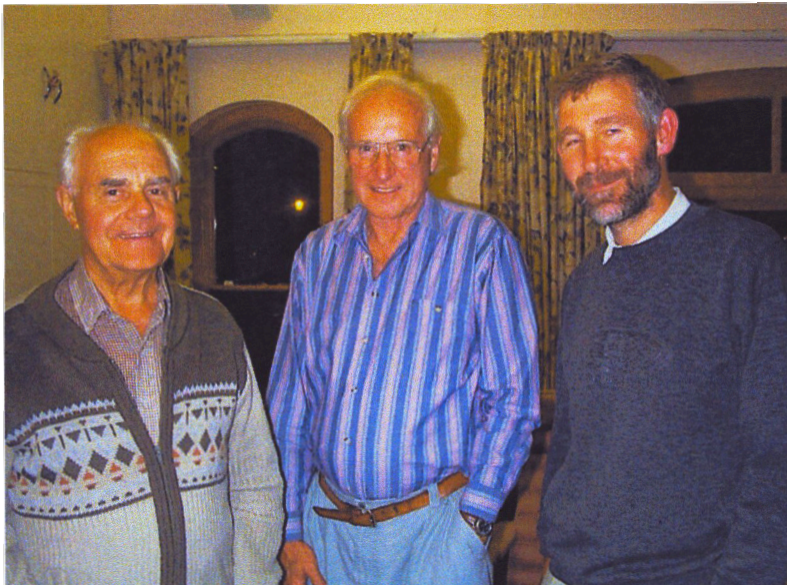
**Answer to the August Puzzle**

In this puzzle you had to find a route through a network of boxes that had the maximum sum. I received seven entries with two tying for equal maximum at 375. They were Dennis Linzmaier and Mike Bayliss. Other entries were from Jenny Clarke, Molly Mills, Peter Woollerton, Clem Robertson and Dorothy Woollerton.

But only the top two names went into the "hat" for the draw; Mike Bayliss was the lucky winner who received a £5 book token. Well done Mike and all the others who had a go.



To save cutting out or photocopying this page you can print a copy of the diagram from:-  
<http://www.ddina.demon.co.uk/8x8puz.gif>



Norman Cureton, Alan Anthony and Rob Webb pictured at a recent meeting at Riverside

# MEMBERS NOTICE BOARD

**This Board is FREE to members  
Please use it!**



## FOR SALE

**ISA Printer Port Card**  
£5

**1.2GB SCSI Hard Drive**  
£10

**ISA Network Card**  
£5

Contact Editor  
Tel: #####

## HELP FOR A BLIND PERSON

**If** any member reads an interesting computer article in a magazine could they please put it on an audio tape for a blind person, who is fairly expert in computers.

He is particularly interested in learning more about Excel and Access in Office 2000 and the Internet.

He would also be interested in programming as he used to do computer programming with the aid of Braille.

If anyone manages to record material on tape, could they please give the audio tape to Christine Jenkins at one of our club meetings and she will take the tape to him.

Thank you - IWPCUG Secretary

## FOR SALE

**Norton System Works 2000 v3.0**

£20 o.n.o.,

Enquiries to:-  
[kieran.grace@\\*\\*\\*\\*\\*.com](mailto:kieran.grace@*****.com)



Hot Key is published on the first Wednesday of every month. This edition was compiled using Microsoft Publisher 2000 and reproduced on an Epson Stylus 880 Colour ink jet printer and a Brother HL-1250 laser printer.

The views and opinions expressed here are those of the contributors alone. No responsibility can be accepted with respect to advice or suggestions made in this journal.