

ISLE OF WIGHT PC USER GROUP

MONTHLY JOURNAL

Issue 123 - February 2002



Peter Wreford and Alex Dawson at the meeting on PDA's at Riverside Centre

Dennis Linzmaier gave an informative talk on PDAs recently and showed a number of different Palmtop and Handheld PCs and then explained how to back up the material on a Psion 5 machine. Mike Bayliss brought to the meeting various models and after Denny explained the benefits of these machines, passed them around to the members present. Denny went on to show how to copy a text file (created in Notepad) to a Psion handheld. He also demonstrated how to connect

a Psion to a PC and explained how to download from the Internet. The connection was made and an infra-red icon was seen in the System Tray. Peter Wreford was then invited to demonstrate his Psion 7 handheld PC, which was impressive to say the least (A feature on the Psion 7 appears on pages 8 and 9). Questions were then fielded on OPL, a programming language and Outlook Express. Denny finished his presentation by explaining how to set-up Hotmail in Outlook Express.

In This Issue

Future Meetings	2
Editorial	4
Win98/WinMe Tips	6-7
Psion 7	8-9
WinFix	10-11
Printer Paper	12-13
Prize Puzzle	14
Cacheman 5.1	15
Notice Board	16

FUTURE MEETINGS

6th February	A.G.M. followed by Questions and Answers	
20th February	Linux Update	Bob Groom
6th March	Corel Draw and Corel Knockout (To be held in the Main Function Hall)	Ian Capon
20th March	Building a Computer	Dennis Parkes
3rd April	Net Meetings & Instant Message Systems	Dennis Linzmaier
17th April	Spreadsheets	David Broughton
1st May	World Wide Disability E-Mail Groups/ Computability	Pat Davidson
15th May	File Formats	Dennis Linzmaier



Mike Bayliss and Denny Linzmaier at the PDA talk at Riverside Centre

**ISLE OF WIGHT PC USER GROUP
COMMITTEE MEMBERS**

3

Honorary President:

Sir Norman Echlin



Chairman:

Dennis Linzmaier

Vice Chairman:

David Broughton

Treasurer:

Bob Groom

Secretary:

Vacant

Membership Secretary/Meetings Reception Assistant:

John Atkin

Hot Key Editor:

Brian Sexton

New Members Co-ordinator:

Dennis Lambeth

Committee Member:

Cliff Maidment

Committee Member:

Roger Skidmore

Committee Member:

Mike Bayliss

Disability Resources Co-ordinator:

Helen Edom

EDITORIAL



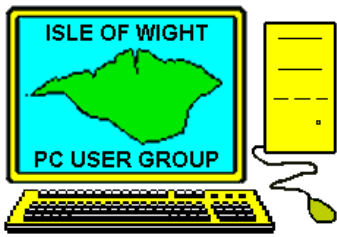
Increase in the price of memory.

It seems that the bonanza of low prices for memory has ended and that the price has doubled to what it was last month. This has obviously caused an increase also in the price of new computers, which manufacturers are reluctant to pass onto the buyer. It is apparent that with memory prices increasing, there is always a knock on effect and it is perceived that the buyer will be more cautious and reduce the amount of memory that he upgrades to. It is not known what the real cause for the exorbitant rise in the price of memory but certain authorities are saying that there is a shortage because certain OEM's (Original Equipment Manufacturers) and other suppliers have stock piled. More likely though is the opinion that with the release of Windows XP and the booming computer sales in China, this situation has caused the shortage of memory.

Epson Printers.

From my own perspective I am finding that the quality of Epson Printers leave a lot to be desired. Using both the Epson 880 and the more recent Epson 680, the printing times are poor. Also the feeding of the paper is disappointing and on the 880 particularly the printer creates badly smeared ink to appear across the corner of the paper and in some cases the corner of the paper is turned over. You would expect Epson printers to feed the paper through automatically without having to use one's hands to feed the paper. My opinion of Epson printers has altered and find that the hype and advertisements for Epson printers does not line up with the results that I am experiencing. In future I would have to give Hewlett Packard printers first consideration with the much improved range of Lexmark printers as an alternative choice.

Recommended website:- <http://www.barrysclipart.com/>



The Isle of Wight PC User Group

welcomes all owners and users of IBM Compatible Personal Computers.

It is a group which seeks to exchange ideas and seek new information.

Our meetings are informal **on the first and third Wednesdays of each month at The Riverside Centre, Newport, 7.30 - 9.30 pm.**

The first Wednesday has usually a formal talk whilst the third Wednesday is more informal, geared to the new user and aims to help out members with specific problems.

Membership is £12 per year.

Visitors are welcome.

This journal, "HOTKEY", is produced every month.

If you would like to know more about us, either come along to one of our meetings or contact one of our Committee Members on one of the numbers on page 3.

Club's Website - <http://www.iwpcug.org/>

H U M O U R

off the mark

by Mark Parisi

www.offthemark.com

5

FINE! GO ON AND DO YOUR SICK AND TWISTED PROCEDURE, BUT I BETTER NOT FIND PICTURES OF THIS POPPING UP ON THE INTERNET!



www.offthemark.com

ATLANTIC FEATURE ©1996 MARK PARISI

MarkParisi@aol.com

off the mark

by Mark Parisi

www.offthemark.com



ATLANTIC FEATURE SYND. © 1996 MARK PARISI www.offthemark.com

ESSENTIAL PC TIPS

Windows 98

Desktop

- If you like the look of an image you see on the Internet, then right-click on it and choose **Set as wallpaper**.
- Shut down your PC quickly by closing all open windows and pressing [Alt] + [F4].

Taskbar and System Tray

- To discover the date, hover the mouse over the clock in System Tray.
- If you would rather see a calendar in full then double-click on the clock to see the Date and Time properties.

Folders and Shortcuts

- To copy, say, 95 files out of 100 in a folder, select the five files that you don't want to use by holding down [Ctrl] and clicking on each one. Then click on **Edit** and choose **Invert Selection**.

Maintenance

- Make a custom shortcut for ScanDisk. Create a new shortcut, entering **ScanDSKW** in the **Command Line** box. Right-click on the new icon and choose **Properties**. Select the **Shortcut** tab and make sure the Target parameter reads:-
C:\WINDOWS\SCANDSKW.EXE /n.
- Running Disk Defragmenter once a month is adequate for most users, not daily or weekly.
- If you get an error message on startup referring to a missing device file with a .VXD extension, then try re-installing the driver that it relates to. This should cure the problem.
- Always make sure your Windows\Temp folder is empty as this can affect the performance of Windows and cause problems when installing software.

Searching

- Search for several file types at the same time by separating each with a semicolon (*.txt; *.html, for example).

Diagnostics

- Keep a record of your system by running **System Information** from **Start, Programs, Accessories, System Tools**. Click on File, Save As to store your PC's details.
- Find out detailed information about the hardware on your PC by clicking on **Start, Run** and typing **hwinfo /ui**.

Set-up and System Tweaks

- Before you upgrade your version of Windows, make sure you have enough free space as up to 1.5Gb can be required for an upgrade to Windows XP.
- When installing software (including Windows) always choose **Custom Installation** to give you more control over what's going on your hard drive).
- Change file associations by holding down [Shift] when you right click a file. Choose **Open with** and select an application.
- Stop a CD from auto playing by holding down [Shift] when you insert the disc.

Device Manager - Use Quickview to view the contents of any file quickly by making a short cut to **C:\WINDOWS\SYSTEM\VIEWERS\QUICKVIEW.EXE** on the desktop. To view a file just drag it on to the icon.

New Features

- System Restore can take up a lot of hard-drive space, so set a limit for it. Select the **Performance** tab in **System Properties**; click on **File System** and adjust the slider.
- System File Protection (SFP) is designed to stop important Windows files being replaced by older versions. SFP doesn't tell you when it's been activated but you can change this by amending the Registry. Go to **HKEY_LOCAL_MACHINE\Software\Microsoft\Windows\CurrentVersion\SystemFileProtection** and change the value to **ShowPopups** to **1**.

Customising Me

- You may have noticed that you can't restart Windows Me in DOS and there's no option on the Startup menu either. To get these features back download the patch from:- www.geocities.com/mfd4life_200

Old Favourites

- Some of Windows' original DOS features may have been removed but there are still plenty available such as Edit (the text editor), Qbasic, and the diagnostic program MSD.EXE. You'll find them in **Tools\oldmsdos**.
- Looking for Microsoft Backup? You can install it from the Windows CD. Browse the CD and go to:- **Addons\MSBackup\msbexp.exe** to install it.

General

- In Windows Me you can use a single click to open a file or folder. Open Windows Explorer and select **Tools, Folder Options**. Under the **Click items as follows** section select **Single-click to open an item (point to select)**.
- Before, you could only run Scanreg after booting to DOS. With Me you can run it within a DOS window.
- Save 150Mb of hard-drive space by deleting the file in the **Windows\options\install** directory. You already have copies of these files on the CD.
- You can speed up the time it takes Me to start up by preventing Windows from searching the floppy disk drive when it boots. Go in to **System Properties** and select the **Performance** tab. Click on **File System**, select the **Floppy Disk** tab and clear the **Search for New Floppy Disk** box.
- SysEdit isn't included in Windows Me, but you can extract a copy from your Windows 98 CD and copy it to your Windows\System folder.
- A new version of *TweakUI* is available for Windows Me. You can get it from:- www.microsoft.com/windowsme/guide/tweakui.exe. ? •
- Preview your images first, then print them directly from the My Pictures folder in Windows Me.
- If you've upgraded to Windows Me and now find that the pages of the Help section are blank, then you'll need to amend the Registry. Create the following keys in the Registry: **HKEY_LOCAL_MACHINE\Software\Classes\.htc** and **HKEY_CLASSES_ROOT\.htc**. Add the following values:
 - Value Name: Content Type**
 - Value Type: String**
 - Value Data: text/x-component.**
- Speed up the time it takes to log on to your ISP by changing a few settings. Right-click **Dial-Up Networking** and choose **Properties**. Select the **Networking** tab and clear **NetBEUI** and **IPX/SPX compatible**. Next, click the **Security** tab and clear the **Log On To Network** box.



PSION 7 MOBILE COMPUTER



The Series 7 is not just about good looks, it is lightweight and compact and is a powerful mobile computer, with 16MB of memory (upgradeable to 32MB), a high quality touch-type keyboard, full colour, touch sensitive screen, the power to provide a whole days work on one battery charge (8.5 hours typical battery life) and a range of connectivity options that give you the freedom to work wherever and whenever you need to.

With full Internet connectivity, seamless integration with your PC and twice the battery life of a normal notebook computer, it provides a unique alternative to more cumbersome portable computing solutions, with a large colour screen and full touch-type keyboard. Plus, it's compact and light enough to be carried easily in a briefcase.

Series 7 comes with a PC docking cable and Windows software, PsiWin 2.3, and it connects directly with PCs straight out of the box. With Series 7, connectivity is so seamless that the Psion actually appears within the user's existing Windows Explorer application. Naturally, Series 7 synchronizes with all of the most popular PC scheduling, contacts and email packages and converts files between leading word processing and spreadsheet desktop applications.

Sending and receiving emails couldn't be simpler. As long as you have email on your PC you can carry your email on your Series 7. There are 2 simple ways of collecting your **email**:

1. Directly from your PC using your PC cable and PsiWin.
2. Collect your email while out on the move by connecting to the Internet.

Choose how you want to collect your Email

- ? Synchronization with your PC allows you to take your email with you wherever you go. No modem is required, just connect to your PC with the **Series 7** PC cable and PsiWin software and follow the step-by-step synchronization task.
- ? Connect directly to the Internet with your modem, mobile or land line and collect your email.

Choose which emails to download

Email displays the contents of each of your mailboxes in turn, so all you have to do is choose which messages to download onto your **Series 7**.

Familiar PC like interface

With **email** you have an Inbox, Outbox, Drafts and Sent folder system in common with other email packages. Once new messages have been downloaded to your '**Inbox**', you can read them at your leisure, reorganizing messages into new folders if necessary, thus keeping work and private emails separate.

Integrate your contacts with the *email* address book

When creating new emails, it's easy for you to choose new recipients from the addresses stored in **Contacts** without having to recreate the address. Just go into the address book where all your contact details are shared with the email address book.

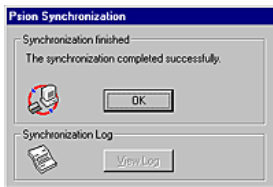
The Series 7 features the latest release of the powerful EPOC operating system, which provides both desktop-like capabilities, and seamless connectivity to PCs, mobile phones and the Internet. Where other mobile devices provide desktop companion applications that are dependent on a PC, Series 7 are fully and seamlessly compatible with desktop applications.



The Psion **Series 7** mobile computer has a range of powerful applications designed to let you work wherever you need to.

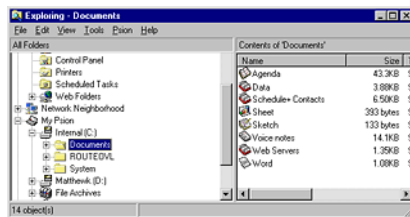
Applications include a word processor, spreadsheet, contacts database, agenda and email, which are compatible with leading office suites, such as Microsoft, Lotus, WordPerfect and Corel.

The **Series 7** comes with its own PC link cable and CD, containing the **PsiWin** connectivity software. After **PsiWin** has been installed on your PC, all you need to do is connect up your Series 7 via the cable supplied. Once connected your **Series 7** is instantly integrated with your PC's Windows environment with the Psion actually appearing within the user's existing Windows Explorer application as an icon on the desktop.



Should anything untoward happen, restoring all your files would then be the work of a few seconds. The backup operation can be automated to back up every time you connect your Psion to the PC or even just once a day or weekly if you wish.

Move files seamlessly between your PC and palmtop. The **Series 7** has an icon on your Windows desktop and appears as just another folder in Explorer.



One of the biggest advantages of using the **Series 7** is its patented touch type keyboard. You can use **Word** to work on reports, letters and memos, with no practical size limit. Just like a popular PC word processor, it shares many similar features that you will already be familiar with, including styles, formatting and templates. You can even use the **Series 7's** 'object' technology to insert tables and pictures inside your **Word** documents. A special 'Outline' feature aids your writing, giving you a powerful glimpse of your document's structure. With the ability to include a selection of templates or create your own pre-defined templates **Word** is great for short memos or even long documents. With the Infrared facility or via the cable you can print directly to a printer or even send your document via fax.

The technical specifications of the Psion 7 are available at:

<http://www.pSION.com/series7/about/hardware/specification.html>

COVER DISK

Programs featured on the cover disk are as follows:-

- Davids Puzzle
- Star Office (full program) Office 2000 type suite
- Mindmanager
- XP compatible? (find out if your system can take Windows XP)
- Laplink
- Paint Shop Pro
- Musicmatch 6
- Zone Alarm
- Personal Firewall
- IE eradicator (removes MS Internet Explorer completely)
- System Restorer (as in Windows Me etc)
- FTP Works to upload Websites
- Anti Spam
- Xara 3D (graphics)
- Express Thumbnail creator
- Acrobat reader 5
- Winzip 8
- Partition Manager plus many other useful utilities

Dennis Linzmaier

WinFix



ZDNet's review of WinFix said that "WinFix is a Godsend" if something goes wrong with Windows. WinFix has also been recommended by major publication like *Windows Magazine* and tech support at leading vendors like Dell and Hewlett Packard. Many users have sent in thank-you letters after WinFix rescued them from serious problems.

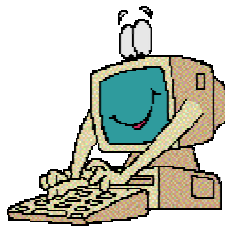
Windows is reasonably easy to use, but under the surface the Windows environment is very complex. WinFix is the only product of its kind that avoids adding any more complexity to Windows. It concentrates on doing only those few basic things that are truly essential to increasing reliability.

WinFix boosts the reliability of Windows to make your PC much more dependable, more like other essential appliances such as TVs and phones. This increased reliability protects your vital productivity and creativity, and enhances them. WinFix is compatible with Windows 98, 98SE, 95 and ME.

WinFix protects and fixes Windows, and lets your PC fix itself. Now you can save and restore your Windows set-up, just like any other important work. Automatically fix system crashes, damaged hard disks, and many other problems. WinFix will protect your productivity and get you back to work quickly.

Continued on page 11

WinFix has nothing to configure, and no learning curve to operate it. It engages you in a simple, intelligent conversation, where wizards guide you through every step, and agents do all the work for you. Being simple to use makes it more effective, especially in stressful situations, such as when your computer goes down.



WinFix Uses two wizard/agent pairs, based around a multiple expert system design. The ProtectionWizard and ProtectionAgent do preventive maintenance and reduce the frequency and severity of problems. The RepairWizard and RepairAgent quickly fix most problems that do occur.

WinFix doesn't modify any Windows system files, runs completely outside Windows, and runs at the hardware/VGA level.

WinFix is shareware - available at the following website:- <http://www.winfix.com/>

TIPS

Download Managers

If you have a large download to obtain software, music and videos from the Internet, your first download should be a download manager. This is an application that allows you to perform multiple simultaneous downloads, resume incomplete downloads and schedule downloads.

Two of the best are:

- Get Right (www.getright.com) and
- Download Accelerator (www.speedbit.com)

Travel Information

Finding the best travel sites on the web is not easy but one of the most impressive can be found at www.fco.gov.uk/travel, the official website of the Foreign and Commonwealth Office and a good source of advice. A guide to smaller, less publicised events around the world can be found at www.whatsonwhen.com. Shopping for tickets and holidays is made easier online, as is planning journeys with timetables. You will find that www.pti.org.uk and www.thetrainline.com are invaluable for this kind of help.

PRINTER PAPER

What's the Difference?

By Alicia King Padgett, Fresno PC User's Group

You finally have a great colour printer with 2400 to 1200 dpi (dots per inch) capability for text and graphics and you can't wait to start printing. According to the manufacturer, it should be able to print photo quality graphics and crisp text files. However, when you actually print something, it seems the print quality is no better than with your old printer. Eventually, you look with envy at your friend's printouts and sigh "Someday I'll be able to afford a high quality printer like theirs." But wait, maybe the problem isn't the printer... perhaps it's the paper.

Let's look at the basics of different printers. Bubble-jet printers (or inkjet printers) squirt heated ink through a matrix of holes to form characters. These small ink droplets are electro statically sprayed from a nozzle onto the paper. Laser printers form an image of the output on a selenium-coated drum, using laser light according to data from the computer. The image is then transferred to the output from the drum using photocopying techniques. Thermal-wax transfer printers and dye-sublimation printers use heat to transfer colour pigment from a ribbon to a special paper to produce photographic-quality colour images.

Inkjet (bubble jet) printers are very affordable for home use. In the store, the printouts may look incredible but when you get home, somehow the printer just doesn't seem to have the same print quality. Most of the time the problem is not the printer, it's the paper. Most people try out several different kinds of photocopy, laser printer, or inexpensive inkjet papers. When an inkjet printer sprays onto these papers, the ink is wicked by the fibres causing an effect known as bleeding. Some inks spread to the sides or the back of the paper making the image less sharp. When the ink bleeds, it isn't all on top of the paper, some has soaked in. This is easy to check by turning the sheet over. If the ink is starting to come through or the front appears lighter, greyed-out, or feathered, as though you were printing with diluted ink, you probably have the wrong paper. To get good quality printouts with an inkjet printer you need to use coated paper stock. A single coated paper is not enough, as it is formulated to keep the ink from getting into the paper fibre but doesn't have the best ink adhesion or reflectivity. Quality printouts need a second coating on top of the ink barrier coating. The second coating optimises viewing by reflecting light back to set off the colours. The second coat also provides a base to adhere the ink. To put it more simply you need a primer coat and a finish coat to generate a quality printout.

Two options controlled by most inkjet printers are configuration for the "Media Type" and "Print Quality". "Media Type" controls the amount of ink set down on the media. It does not control or affect the resolution. "Print Quality" controls the "Resolution" of the images printed.

Now you know what type of paper to use, let's see what some of the other manufacturing terms mean!

Coated Paper—paper with a coated surface that gives the paper a smooth finish.

Finish—the special characteristics of a paper's surface, which differ from grade to grade. High, low and textured finishes, for example, exhibit varying degrees of smoothness, ink receptivity and printability.

Ink Holdout—the ability of the paper to keep ink on its surface rather than absorb it into the sheet (e.g., paper with good ink holdout would require less ink and exhibit less "feathering" than a highly absorbent paper).

Ink Receptivity—the degree to which a paper resists or accepts ink penetration based on variations in its size and coating.

Laser Papers—papers suited for optimum performance on heat fused, high-resolution, laser printers used in desktop publishing. (Not recommended for inkjets)

Ream—500 sheets of paper, regardless of size.

High Resolution—Coated 24 lb paper provides distinct crisp details and colours for graphics, text and photographic images. This paper has a non-resin coating and provides exceptional results at an economical cost.

Photo Glossy—Photographic coated paper provides a heavy surface for “true” photo applications. Gives images a glossy photographic appearance. This paper may also be obtained with an extra coating that bonds with the ink to provide a waterproof image.

Clear Transparency Film—A clear polyester base coated with a specifically formulated quick dry emulsion for optimum performance. Produces bright colourful overlays and presentation foils.

T-shirt Transfer—An iron-on product that utilizes a “cool release” process to maximize image detail and colour transfer. Look for an easy to use product with easy peel backings and machine washability.

For economy, print your images on inexpensive 80gsm paper until you are satisfied with the composition, then switch to the more expensive media. Try printing the same image on several types of media, you’ll be amazed at how different they look. Most of all, have fun and experiment with different paper media, you’ll be amazed at what your inkjet printer can do for you!



Paper Available

Staples 80gsm Inkjet - high quality inkjet paper for sharp, clear printing - £3.49 per ream

Staples A4 80gsm Copy Paper - suitable for photocopiers and laser copiers - £3.29 per ream

Staples A4 Laser Paper - ideal for laser printers and fax machines - £3.49 per ream

Staples A4 80gsm Multipurpose - for use with laser, inkjet, photocopier and fax machine - £4.29 per ream

Rey ‘JetPrint’ - 2 sided matt paper for monochrome and colour inkjet printing - 90gsm - £5.40 per ream

NB:- Staples has a vast range of Epson and Hewlett Packard photo quality and glossy papers plus **Rey** and **DataCopy** coloured and fluorescent paper.

Pick up a 310 page, full colour catalogue from Staples, Newport.



PRIZE PUZZLE CORNER
FEBRUARY 2002
 by David Broughton



The puzzle this month is a computer program called FCW which stands for Farmer-Chicken-Wife. The farmer and his wife have to catch the chicken that is running round the farmyard. Have a go and see if you can catch the chicken. Full instructions for playing the game are contained within the program. You can run the program from Windows (just double-click FCW.EXE) or from a DOS prompt.

If there is a cover CD-ROM you should find it there. Alternatively, go to the new club web site at www.iwpcug.org, select "Members' Area" from the left hand menu, then "David Broughton's" and finally "List of Files" where FCW.ZIP will be found. It is zipped (compressed) to save download time so you must unzip it after downloading to get the executable program FCW.EXE.

On success you get a secret code word to show you have done it. Please send that word to me, David Broughton, to arrive by 6th March 2002 to be entered into the prize draw.

Result of the December Puzzle

This puzzle was to find how many different cubes one can get by painting each face with a different colour from a pallet of 6 colours. The answer is 30. Start by orienting the cube to have the red face facing you. Then the green face is either adjacent to the red face or it is opposite the red face. If it is adjacent, rotate the cube so that the green face is on top. Now there are four remaining faces to be coloured in any permutation, which is $4! = 24$ different ways so far. When the green face is opposite the red, rotate the cube so that the blue face is on top. Now there are three faces to colour in any permutation or $3! = 6$. $24 + 6 = 30$. The answer.

I had three answers but only one was correct. It came from John Bownas who wins the £5 book token. Congratulations to John and better luck next time to everyone who attempted to grapple with this mental exercise.

David Broughton



CacheMan The disk cache management tool
<http://outertech.com/>

Cacheman is a utility which tweaks the Disk Cache settings of Windows 95/98/Me/XP and prevents frequent swapping of the data to hard drive resulting in an improved performance, system reaction time and even stability. Besides this **Cacheman** corrects also generic problems on systems with more than 512MB of RAM.

Cacheman enhances a PC's operating system performance by reducing slow paging file usage and making more memory available. Designed with built-in wizards that even the novice computer user can use, **Cacheman** allows you to optimise your operating system's Disk Cache, Name & Path Cache, CD-Rom Cache, and Icon Cache. Version 5.1 includes an improved uninstaller that restores your computer to its original settings regardless of the tweaks made, pre-defined profiles to configure memory based on computer usage, and other important enhancements. Tweak several system settings to improve performance, create system configuration reports, and more with **Cacheman 5.1**.

What is Disk Cache?

Disk Cache is a part of RAM that acts as an intermediate buffer when data is read from and written to file systems on secondary storage devices.

The Disk Cache driver stores the most recently accessed data in RAM. When a program needs to access new data, the operating system first checks to see if the data is in the cache before reading it from the disk. Because computers can access data from RAM much faster than from a storage device, disk caching can significantly increase performance.



Denny Linzmaier demonstrating how to connect a PDA to a laptop computer

